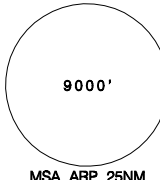
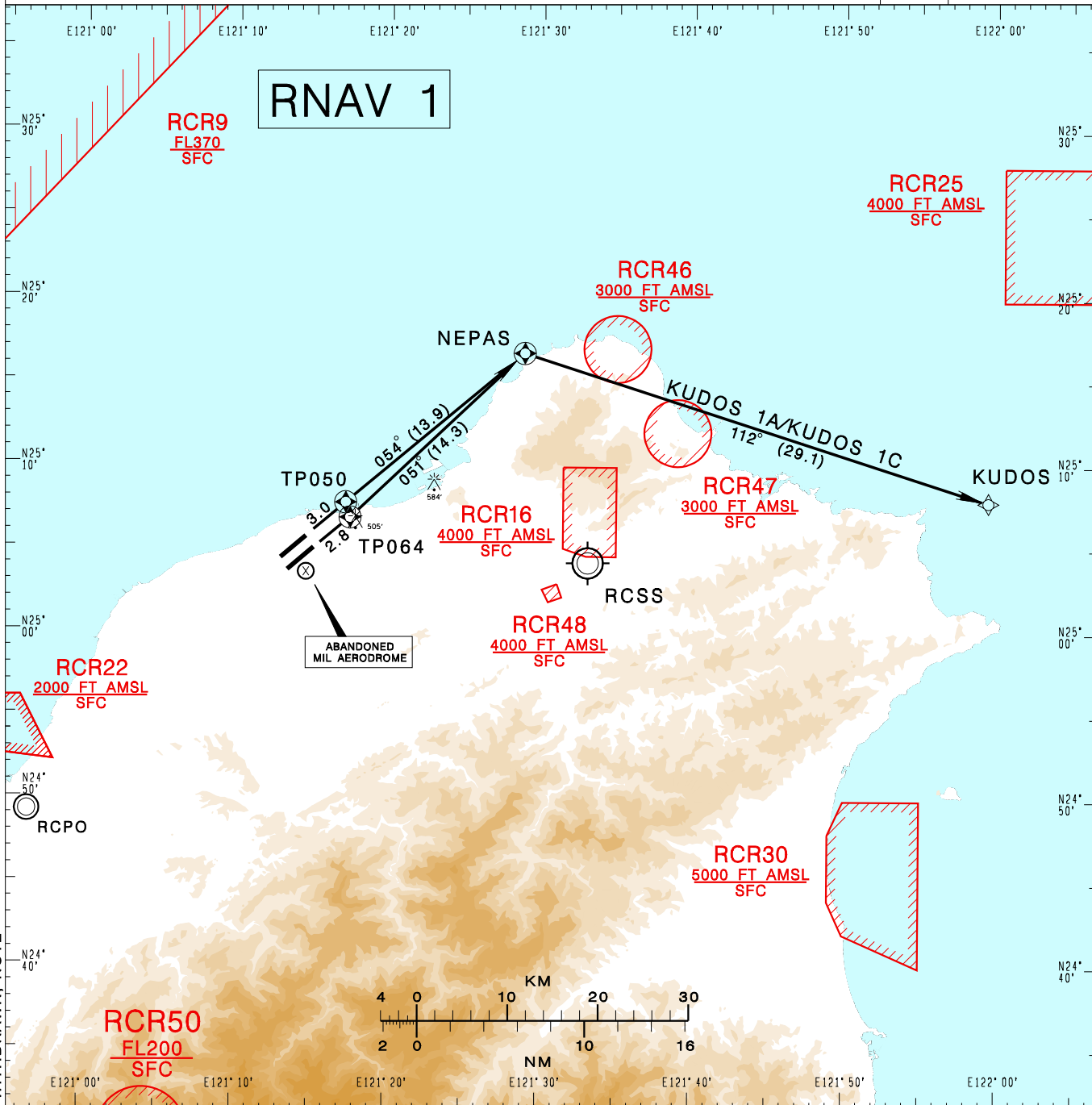


臺灣桃園國際機場
TAIPEI/TAIWAN TAOYUAN INTL AD

RCTP SID
KUDOS 1A RNAV(RWY05R)
KUDOS 1C RNAV(RWY05L)

TAIPEI APP 125.1 128.5	TAIPEI TWR 118.7 129.3	ATIS 127.6	 MSA ARP 25NM 9000' VAR 5° W	
Apt Elev: 108'		Trans Level: FL130		Trans Alt: 11,000'
BEARINGS ARE MAGNETIC; DISTANCES ARE NAUTICAL MILES; ELEVATIONS, HEIGHTS IN FEET				



CHANGES: RCR49 COMPLETELY WITHDRAWN; NOTE

KUDOS ONE ALFA RNAV DEPARTURE
Climb on RWY HDG until leaving 600ft, then direct to TP064, NEPAS, then to KUDOS, cross NEPAS at or above 4500ft.

KUDOS ONE CHALI RNAV DEPARTURE
Climb on RWY HDG until leaving 600ft, then direct to TP050, NEPAS, then to KUDOS, cross NEPAS at or above 4500ft.

NOTE

- Minimum climb gradient required:
RWY 05L:
4.1%(250 ft/NM) until NEPAS.
RWY 05R:
4.7%(286 ft/NM) until NEPAS.
- ATS surveillance required.